

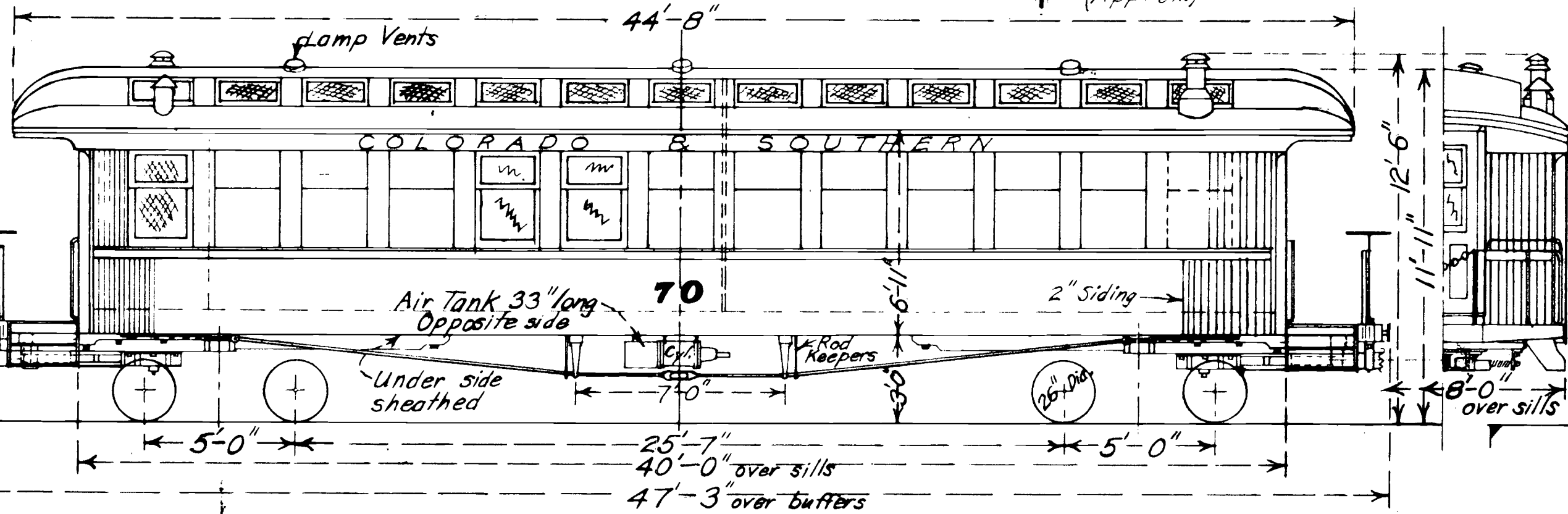
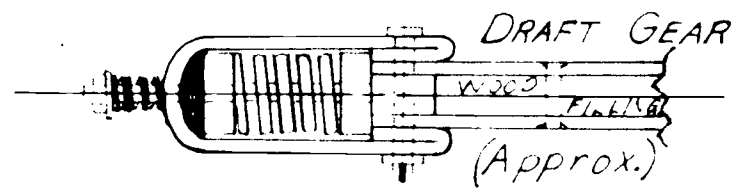
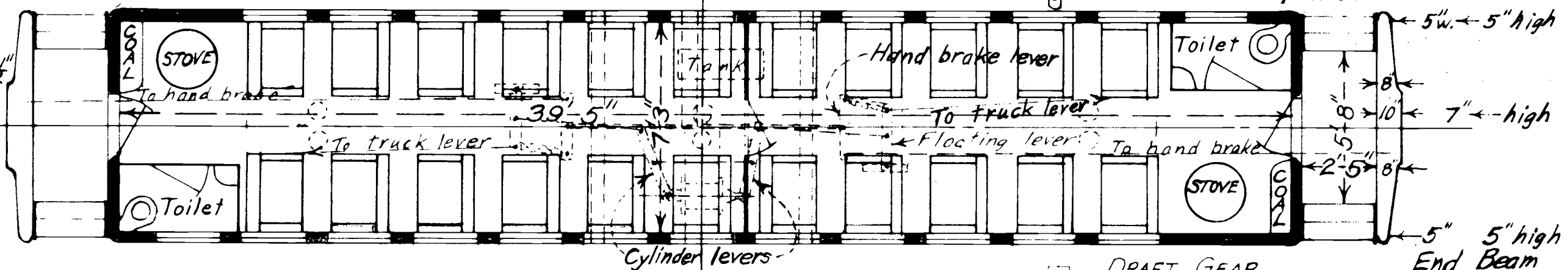
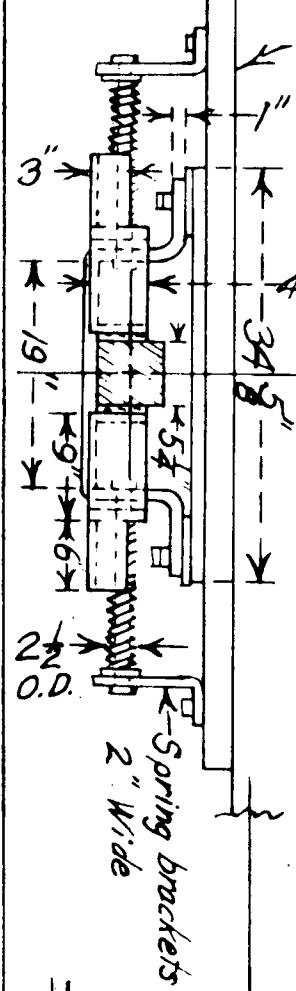
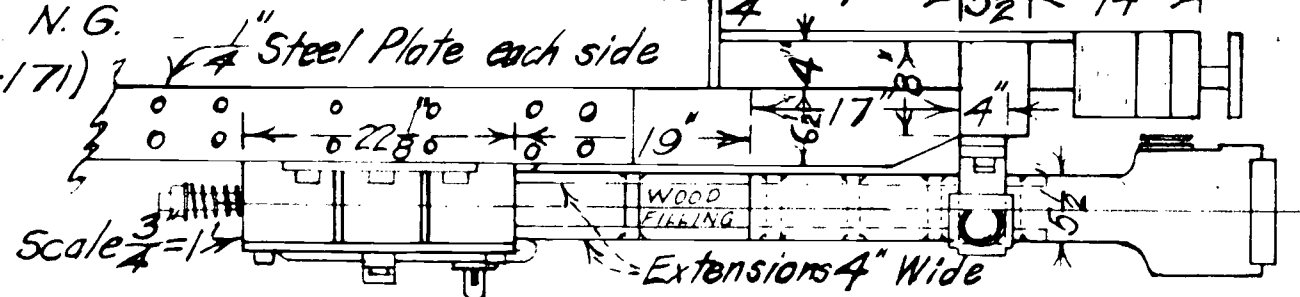
Built St. Charles Car Co. - 1896

Colorado and Southern R.R.

Coaches 70-73 N.G.

(Before 1906 #168-171)

Scale $\frac{1}{4}'' = 1'$ → 5½' ← 14' ←



Car painted Coach or Pullman Green; Gold lettering

Originally Dwg. No C-A

C-104

5/2/64

6/24/59

Revised

3/8/59

JWM

BABY GRANDE WESTERN

BALSAM SHOPS

Dec. 5, 1948