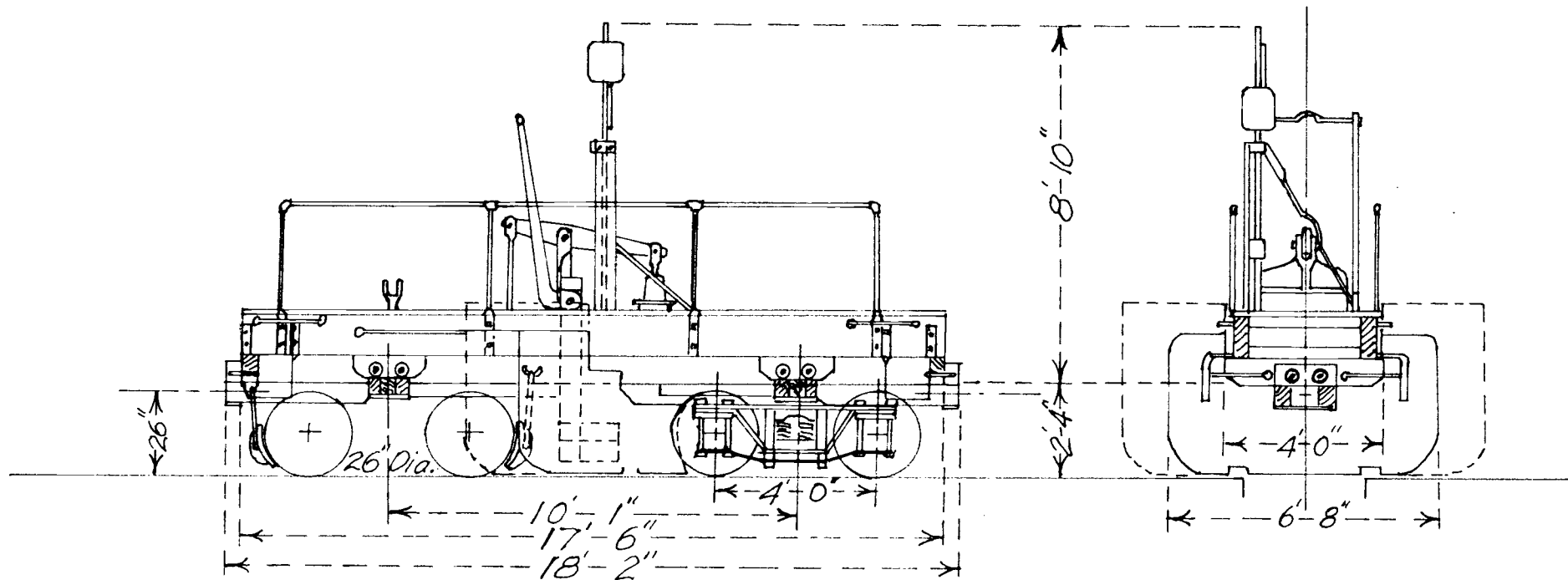


Narrow Gauge

COLORADO & SOUTHERN
FLANGERS NOS 013 to 016

Scale $\frac{1}{4}'' = 1'$



Data from folio sheet courtesy
George Lundberg and photo 015

BABY GRANDE WESTERN
BALSAM SHOPS
DRAWN: J.W.M. N^o C - 20
Wheat Ridge, Colo. 11-30-60